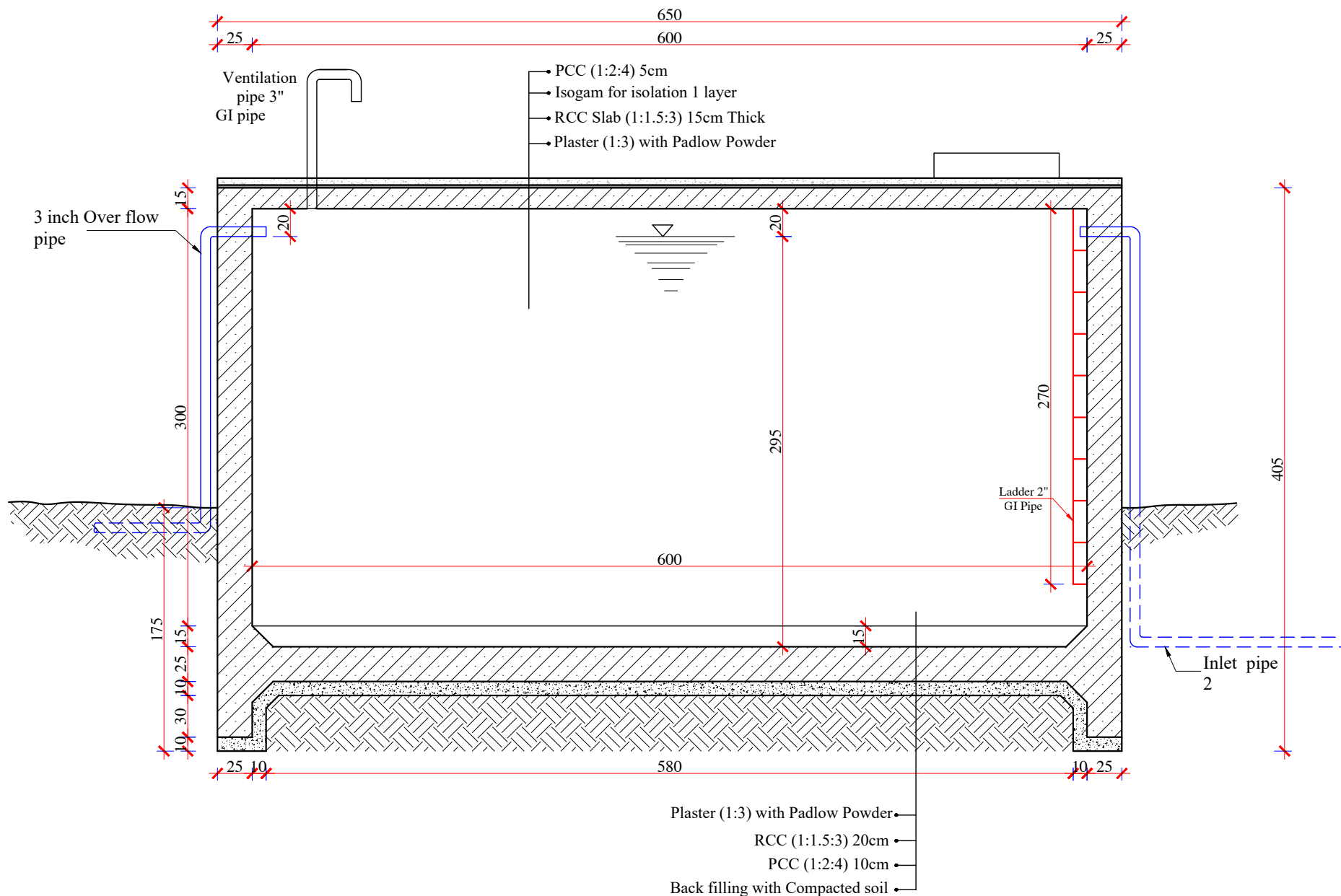
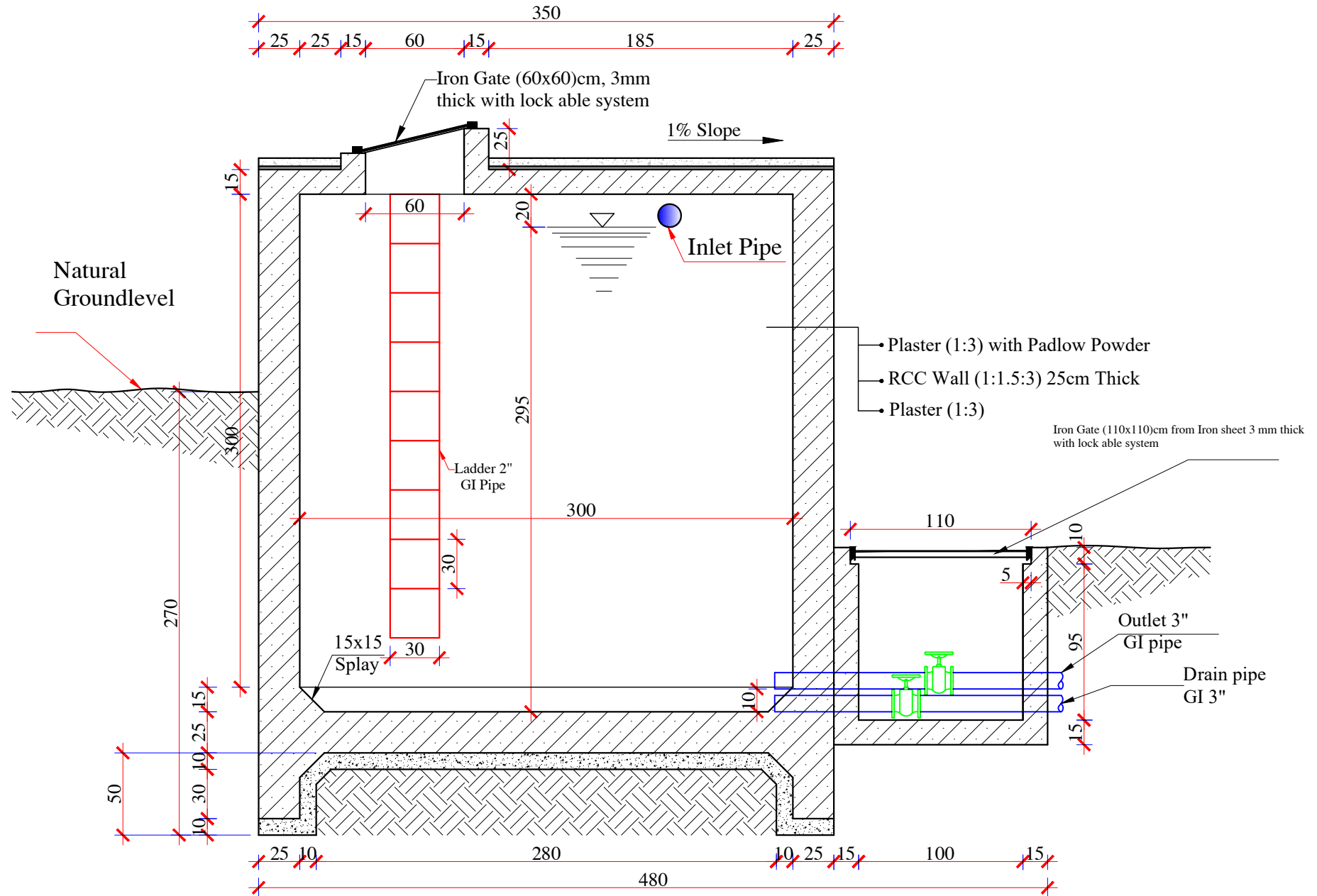
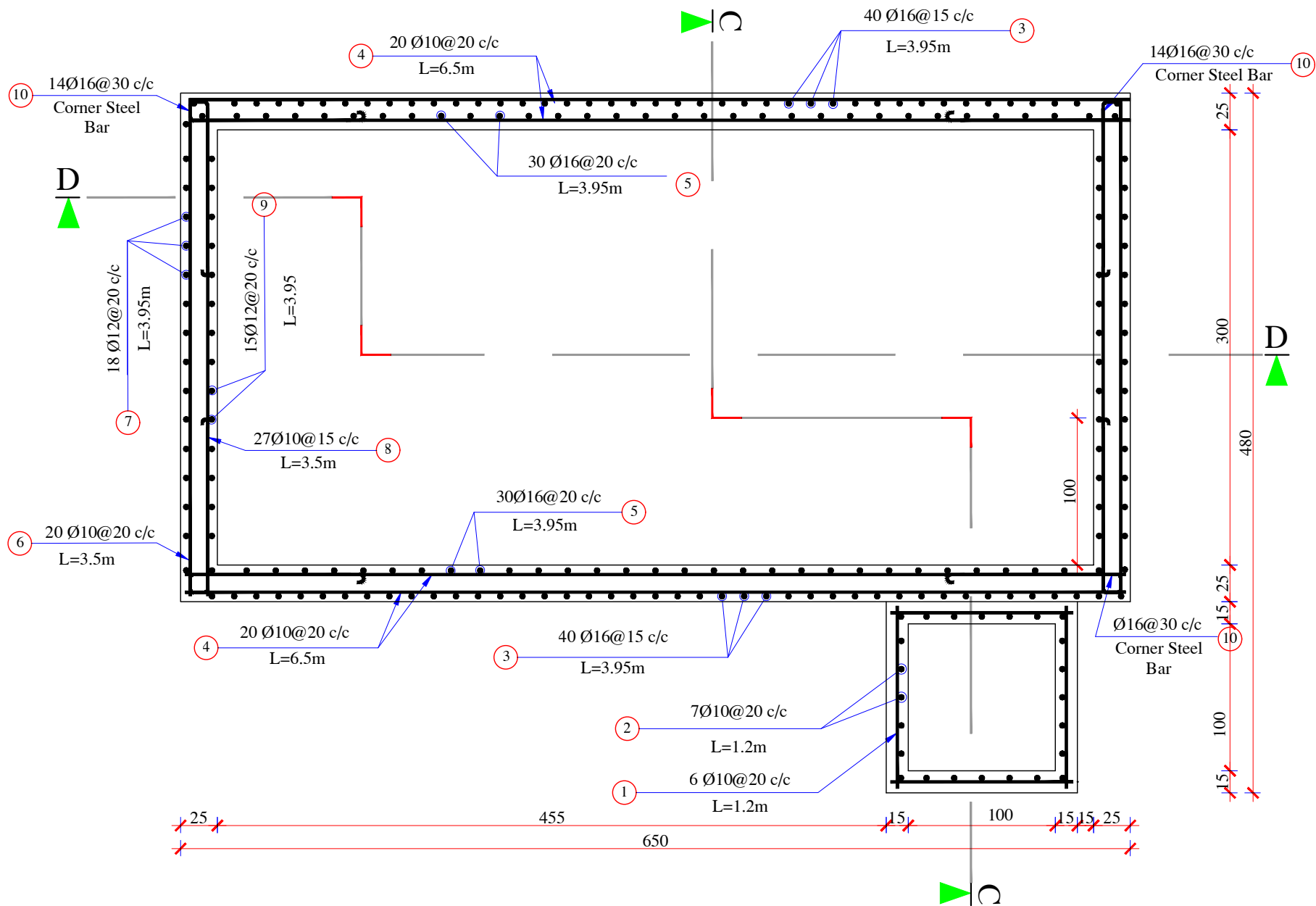


Note:

- 1- All dimensions are in cm unless otherwise stated.
- 2- During RCC work vibrator must be used to avoid water leakage from reservoir.
- 3- All PCC works should be with 1:2:4 mortar unless otherwise stated.
- 4- All RCC works should be with 1:1.5:3 mortar.
- 5- Isolation material is glass wool.
- 7- Curing must be continued upto 28 days.
- 8- Clear and Clean water must be used every where.
- 9- The inlet, outlet, overflow and washing pipes should be adjusted according to site condition.





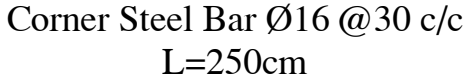







[illegible]

Bar Dia (mm)	Total Length (m)	Weight (kg/m)	Total weight (kg)	Total weight +5% (kg)
10	1094.8	0.6166	675.05	708.8
12	913.2	0.888	810.92	851.46
16	693	1.579	1094.24	1148.95

	SURVEYED BY	MEDAIR Engineering Dep	CHECKED BY	Eng. Obaidullah Muneeb	SCALE	1:XX		PROVINCE	Urozgan	PROJECT NAME WASH Project DRAWING TITLE Section C-C	<i>Water Supply System for Medair Health Facility (BHC) and Surrounding Community</i>
	DESIGNED BY	MEDAIR Engineering Dep	REVIEWED BY		DATE	Sep-2025		DISTRICT	Chinarto		
	DRAWN BY	WASH team	APPROVED BY		DRAWING NO			VILLAGE	Patan		



 	SURVEYED BY	MEDAIR Engineering Dep	CHECKED BY	Eng. Obaidullah Muneeb	SCALE	1:xx		PROVINCE	Urozgan	PROJECT NAME	Water Supply System for Medair Health Facility (BHC) and Surrounding Community
	DESIGNED BY	MEDAIR Engineering Dep	REVIEWED BY		DATE	Sep-2025		DISTRICT	Chinarto	DRAWING TITLE	
	DRAWN BY	WASH team	APPROVED BY		DRAWING NO			VILLAGE	Patan	Section D-D	